

ROMO

— ETSU WALLCOVERINGS —
PRESS RELEASE



ETSU

Wallcoverings

A stylish range of understated semi-plain wallcoverings, the Etsu collection offers a usable compendium of luxury and sophisticated designs.

9 Designs



“Quiet but impactful, our Etsu wallcovering collection offers a usable compilation of must have designs and textures.”
Emily Mould, Design Director



ETSU

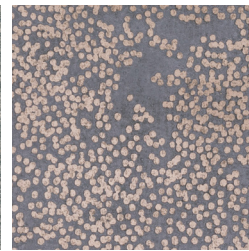
Wallcoverings

The complexity of weaves has been explored and translated in this exciting collection of wallcoverings. Taking inspiration from classic Romo designs such as, Mendel a semi-plain boucle and Dufrene a decorative jacquard, the Romo studio has focused in on the subtle textural details found within these weaves to create wallcoverings that feature all the desirable touches that weaves have to offer. The result is five stunning wallcoverings that at first appear subtle but are full of intricate textures. The Etsu collection is then completed by four enticing small-scale designs.

Intricate details are elevated by glimmers of luxe metallics and fine textures that add an unexpected element. Complemented by a simple and sophisticated palette of soft shades and rich metallic tones, Etsu is a collection of refined indulgence.



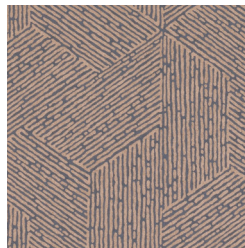
LYRA
Embossed Vinyl
Wallcovering
10 Colours



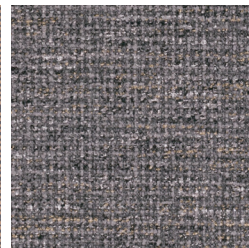
NYIRI
Non-woven
Wallcovering
6 Colours



DUFRENE
Embossed Vinyl
Wallcovering
7 Colours



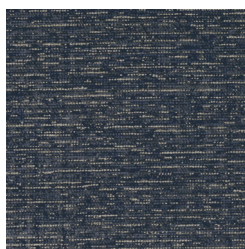
ESCHER
Non-woven
Wallcovering
5 Colours



MENDEL
Embossed Vinyl
Wallcovering
5 Colours



KAURI
Embossed Vinyl
Wallcovering
4 Colours



ELKIN
Non-woven
Wallcovering
8 Colours



ETSU
Embossed Vinyl
Wallcovering
8 Colours



KOUTU
Non-woven
Wallcovering
5 Colours

About Romo

The founding brand of The Romo Group, Romo is renowned for its assorted library of classic and contemporary designs and versatile plains, offering a diverse style and timeless elegance enriched with a sophisticated colour palette.

Led by Design Director Emily Mould, the Romo studio is a continuous hub of activity and creativity. An Aladdin's cave of sketches, paintings, fabric and colour charts, the studio walls are a constant source of inspiration. Each launch the designers research new ideas, finding inspiration in an array of influences from travel and fashion to nature and the outdoors.

Romo is part of The Romo Group, a family run business in its fifth generation. The range is available worldwide through an extensive network of selected interior designers and retail outlets.

Please contact us for price information, samples and images, we are also happy to arrange interviews and offer expert commentary from our designers.

UK

Iain Niven - iain.niven@romo.com
0207 352 7801

USA

Tamar Mashigian - tamar@cdecor.com
310-276-5001

Europe

Roberta Natalini - roberta.natalini@romo.com
+44 (0) 1623 755 881

