

kirkbydesign

**FLOW RECYCLED WEAVES**

PRESS RELEASE



# FLOW

## PET RECYCLED WEAVES



A tactile semi-plain and two contemporary designs make for a sophisticated, versatile collection of recycled jacquard weaves, made from 100% PET recycled polyester yarns produced from waste plastic bottles.

### MAGMA

A tonal appearance and irregular weave effect give depth and intrigue to this tactile semi-plain.

### FLOW

An organic, multi-coloured pixelated design creating a contemporary, textured look presented in a concise palette of on-trend colour combinations

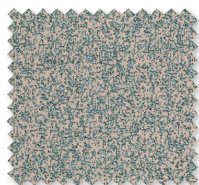
### STACK

Tessellating blocks of colour form a retro, small scale geometric weave.



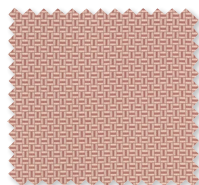
### MAGMA

100% PET recycled polyester yarns  
27 Colours



### FLOW

100% PET recycled polyester yarns  
6 Colours



### STACK

100% PET recycled polyester yarns  
11 Colours



As part of Kirkby Design's commitment to reducing the impact on the environment with the Flow collection, they have partnered with Marine Conservation Society and will be donating 5% of income generated from every metre sold for the lifetime of the collection. The Marine Conservation Society is the UK's leading charity for the protection of our seas, shores and wildlife. For more information, please visit [www.mcsuk.org](http://www.mcsuk.org).

### RECYCLING PROCESS:

Waste plastic bottles are first cleaned and made into flakes which are blended, melted and turned into chips. The chips are melted, extruded and made into a fibre which is then spun into a PET polyester yarn, the yarn is then dyed and woven into fabric. Approximately 100 x 0.5L waste plastic bottles are used to produce 1m of fabric.

### OTHER ENVIRONMENTAL ASPECTS:

- Water used during production is recycled for reuse in the process, further minimising the impact on the environment.
- All fabrics in the Flow collection are fully recyclable, meaning they can be repurposed for future use and are therefore 'circular' in nature.
- Global Recycled Standard (GRS) Certified
- ECO-PATH certified

### PRODUCT INFORMATION:

- Suitable for drapes, accessories and upholstery  
(must be treated with an appropriate fire retardancy treatment for upholstery in the UK)



## ABOUT KIRKBY DESIGN

Led by Brand Director, Jordan Mould, influential British interiors brand, Kirkby Design, has a contemporary and sometimes playful approach to innovative design and colour. Creating distinctive textiles from its in-house studio in London, Kirkby Design has also pioneered unique collaborations including the successful Underground collection with Transport for London and with the iconic fashion brand, Eley Kishimoto.

Kirkby Design is part of The Romo Group, a family run business in its fifth generation. The range is available worldwide through an extensive network of selected interior designers and retail outlets.

Please contact us for price information, samples and images, we are also happy to arrange interviews and offer expert commentary from our designers

UK

Iain Niven  
iain.niven@romo.com  
0207 352 7801

USA

Tamar Mashigian  
tamar@cdecor.com  
310-276-5001


Europe

Roberta Natalini  
roberta.natalini@romo.com  
+44 (0)1623 727016

 @KirkbyDesign

 kirkbydesign

 @KirkbyDesign

 Kirkby Design

