

GRAPHIC NATURE

SUSTAINABLE DECORATIVE WEAVES
PRESS RELEASE

kirkbydesign



GRAPHIC NATURE

SUSTAINABLE DECORATIVE WEAVES PRESS RELEASE

Progression through experimentation; the Graphic Nature collection includes eight decorative weaves that incorporate sustainable and recycled materials creating yarns that are better for the environment such as hemp, bamboo and Ahimsa silk.

Inspired by natural wonders and given a graphic edge, vistas of marble, basalt columns and rock faces are translated into bold geometrics and contemporary graphics. Unmistakably Kirkby, the collection comprises an innovative mix of materials and styles, including cut and uncut velvets, a super-soft chenille and a warming wool.

kirkbydesign



RACER - SUSTAINABLE JACQUARD WEAVE

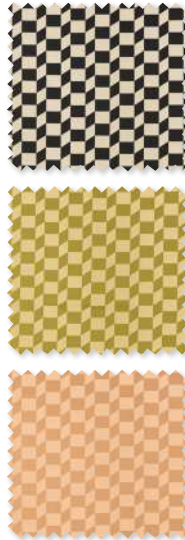
Graphic, grid-like salt pans influenced this chequered weave, where areas of responsibly sourced viscose contrast with matte areas made from blended organic and recycled cotton.

SUSTAINABLE NOTES

- The viscose is made using sustainable wood pulp from environmentally friendly managed forests where they replant the trees, look after the eco-systems and encourage biodiversity.
- The cotton used in Racer is organic, meaning it is grown without the use of pesticides or fertilisers, resulting in improved soil quality and reduced water consumption. It also requires less energy than traditional cotton production and therefore produces fewer greenhouse gases.

8 colours |   

40% VI (FSC), 31% Recycled CO, 19% Organic CO, 10% PL



GLINT - SUSTAINABLE JACQUARD WEAVE

Inspired by natural patterns found in marble, GLINT is woven from cotton and ethically produced silk, known as Ahimsa (ERI) silk. The contrasting appearance of matte and lustrous yarns give the design a sense of depth and movement.

SUSTAINABLE NOTES

- Ahisma silk is spun from the empty cocoons left by silkworms once hatched, which is considered a more ethical method of producing silk.

3 colours |   

76% ERI SE, 24% CO



DIP - JACQUARD WOVEN BAMBOO COTTON

DIP is an ombre woven using ten different shades of yarn, creating a gentle diffusion of colour. A mix of Tanboocel™ bamboo and cotton give the fabric it's soft touch and subtle sheen. DIP is suitable for both drapery and upholstery and is made from 62% Tanboocel™ bamboo.

SUSTAINABLE NOTES

- Tanboocel™ is the trademark of the bamboo fibre used in this quality
- Bamboo is a fast-growing fibre that is grown without the use of pesticides or fertilisers and is biodegradable.
- Bamboo absorbs five times more carbon and produces up to 35% more oxygen than an equivalent stand of trees, helping aid against greenhouse gases and climate change. Bamboo grows very densely and requires half the space that cotton needs to produce the same amount of yield. DIP is a biodegradable product

4 colours |   

62% BA, 38% CO





AERIAL - SUSTAINABLE DECORATIVE VELVET

A sustainable cut and uncut velvet for interiors, woven from 63% recycled cotton. A graphic design influenced by aerial views of crop fields. Jagged shapes in a mix of textures come together in one statement pattern.

SUSTAINABLE NOTES

- The cotton used in Aerial is recycled from the textile industry which prevents cotton from going to landfill, reduces demand for new cotton production and therefore reduces water consumption and carbon emissions.

4 colours |  

63% Recycled CO, 22% CO, 15% Virgin CO




POP - SUSTAINABLE DECORATIVE VELVET

A tribute to the humble cotton plant, POP recreates clusters of cotton bolls through pops of velvet that stand proud from a satin ground. Fluffy in appearance and super-soft in texture, this decorative velvet is woven using a mixture of recycled and sustainable cotton.

SUSTAINABLE NOTES

- Virgin cotton is used in Pop, the yarn is created without any washing or bleaching, therefore, less energy and no water are required in the yarn making process. Virgin cotton is very strong as the fibres are long, making it a more sustainable and durable fibre.
- The recycled cotton used in POP is recycled from the textile industry which prevents cotton from going to landfill, reduces demand for new cotton production and therefore reduces water consumption and carbon emissions.

4 colours |  

60% Recycled CO, 26% CO, 14% Virgin CO





VINE - DECORATIVE JACQUARD WEAVE

Decorated with a playful, irregular woven stripe, this upholstery fabric has the calming effect of flowing vine leaves. The addition of natural hemp to this cotton weave creates a textured, two-tone cloth with a seersucker effect.

SUSTAINABLE NOTES

- Hemp is considered a sustainable fibre as it is grown without the use of pesticides or fertilisers. Also, unlike the production of other crops used in textile manufacturing, growing hemp enriches the soil with nutrients and requires very little water.
- Hemp plants are cultivated at close proximity, producing a high yield and storing large quantities of CO2 each year.

7 colours |  

87% CO, 13% HA





STEP FR - SUSTAINABLE DECORATIVE WEAVE

STEP is a playful and practical geometric inspired by long basalt columns that occur when lava cools and contracts.

SUSTAINABLE NOTES

- The wool in STEP is recycled from fashion. It is first sorted into colour, removing the need to dye the wool, reducing water and energy consumption, as well as the use of chemicals.
- The cotton used in STEP is organic, meaning it is grown without the use of pesticides or fertilisers, resulting in improved soil quality and reduced water consumption. It also requires less energy than traditional cotton production and therefore produces fewer greenhouse gases.

4 colours |  

55% Recycled WO, 40% Organic CO, 5% AF




ARENITE - RECYCLED CHENILLE

All about the texture, ARENITE is a super-soft chenille woven from recycled cotton from the fashion industry and recycled PET polyester made from waste plastic bottles. This semi-plain has a multi-coloured, twisted, recycled cotton yarn, adding depth and detail reflective of an Arenite rock formation.

SUSTAINABLE NOTES

- The cotton used in ARENITE is recycled from fashion which prevents cotton from going to landfill, reduces demand for new cotton production and therefore reduces water consumption and carbon emissions.
- PET recycled polyester yarns are made from waste plastic bottles. These are first cleaned and made into flakes which are blended, melted and turned into chips. The chips are then melted again, extruded and made into a fibre which is then spun into a yarn, and finally dyed and woven into fabric.

11 colours |  

46% Recycled PL, 42% Recycled CO, 12% PL



ABOUT US

kirkbydesign

Led by Brand Director, Jordan Mould, influential British interiors brand, Kirkby Design, has a contemporary and sometimes playful approach to innovative design and colour. Creating distinctive textiles from its in-house studio in London, Kirkby Design has also pioneered unique collaborations including the successful Underground collection with Transport for London and with the iconic fashion brand, Eley Kishimoto.

Kirkby Design is part of The Romo Group, a family run business in its fifth generation. The range is available worldwide through an extensive network of selected interior designers and retail outlets.

Please contact us for price information, samples and images, we are also happy to arrange interviews and offer expert commentary from our designers.

UK & International

Iain Niven
iain.niven@romo.com
0207 352 7801

Europe

Roberta Natalini
roberta.natalini@romo.com
+44 (0)1623 727016

USA

Hello PR
romo@hellopr.com
323.452.3310

Sweden

Mia Nordangård
Mia.nordangard@romo.com
08-660 58 22

South Africa

Lauren Hodge
Showroom.jhb@romosouthafrica.com
011 262 4167 / 084 614 7672

