

HEIR

DECORATIVE WEAVES & PRINT
PRESS RELEASE

kirkbydesign



HEIR

DECORATIVE WEAVES & PRINT PRESS RELEASE

The Heir collection of responsible decorative textiles has a young royal vibe, conjuring thoughts of grand estates that are home to eccentric interiors. Kirkby gives a modern twist to vintage inspired graphic patterns and unique textures, creating an eclectic mix of designs with a hint of nostalgia that allude to something familiar and authentic but not overstated.

Playful patterns, including graphic geometrics and organic shapes emerge as crisp cut and uncut velvets, soft chenilles and blanket weaves. With it's vintage vibe, the collection celebrates the charm of bygone trends while presenting something brilliantly new and exciting. The colour palette features regal, jewel-like shades alongside retro-inspired tones that are both captivating and playfully sophisticated.

The essence of innovation, HEIR combines the modernisation of recycled and responsibly sourced yarns with classic inspiration.

kirkbydesign





SHUFFLE

DECORATIVE WEAVE

A modern take on a classic craft, SHUFFLE FR draws inspiration from traditional patchwork blankets, made up of 12 large-scale squares that alternate in complementary colour. Woven from the perfect blend of natural fibres, the texture of the cloth evokes nostalgia with its blanket-like quality. The result is a bold, heritage-inspired upholstery fabric that feels both timeless and dynamic.

2 Colours

74% WO, 11% PL, 11% CO, 4% PA



K5291/01



K5291/02



HEARTS

COTTON VELVET

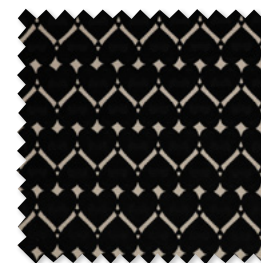
A playful tribute to romantic gestures, this retro cut and uncut velvet depicts a flurry of interlocking HEARTS inspired by the suit of hearts in a deck of playing cards. Woven from 64% recycled cotton, this fabric brings together nostalgia and individuality, offering a retro feel with a unique, timeless design that speaks for itself.

2 Colours

74% WO, 11% PL, 11% CO, 4% PA



K5369/01



K5369/02

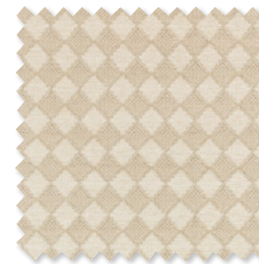
TAROT

DECORATIVE CHENILLE

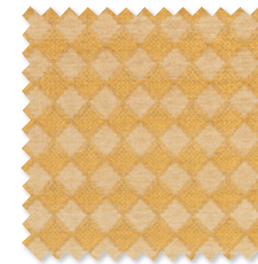
TAROT, woven from responsibly sourced viscose and organic cotton, features a distinctive pattern inspired by regal diamond shapes found in a traditional deck of cards, evoking a sense of timeless elegance. A vintage aesthetic, the two-tone chenille gives the design both depth and tactile softness.

4 Colours

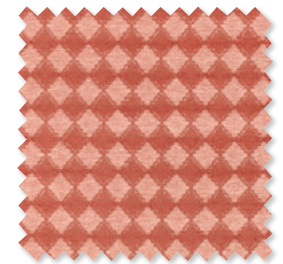
74% WO, 11% PL, 11% CO, 4% PA



K5362/01



K5362/02



K5362/03



K5362/05

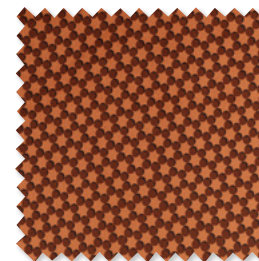
ZODIAC

PRINTED VELVET

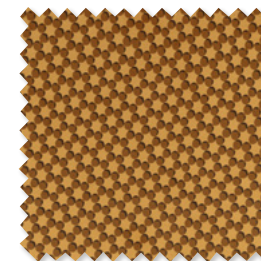
ZODIAC captures the quiet mystery of the night sky, where constellations of stars form delicate patterns and celestial belts stretching across the atmosphere. On a rich, recycled polyester velvet ground, small-printed polka dots float like distant stars, each surrounded by a soft shadow that adds depth and intrigue.

4 Colours

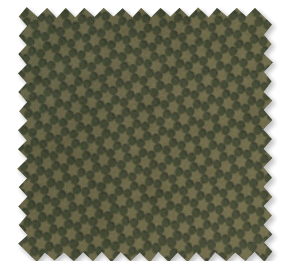
74% WO, 11% PL, 11% CO, 4% PA



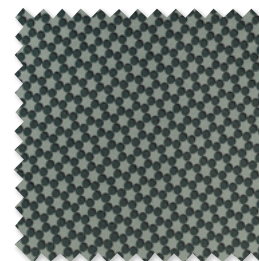
K5366/01



K5366/02



K5366/03



K5366/04

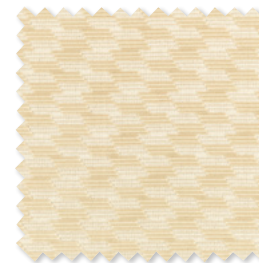
STRINGS

COTTON VELVET

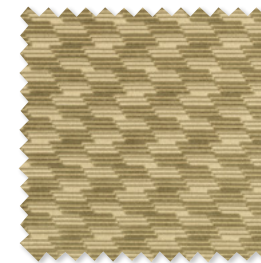
STRINGS is inspired by the rhythmic flow of classical music, where the staves of musical notes create structure and harmony. Mirroring this melodic precision, intersecting horizontal stripes and a contemporary geometric is woven from 64% recycled cotton to form a two-tone cut and uncut velvet that creates a multi-dimensional surface

4 Colours

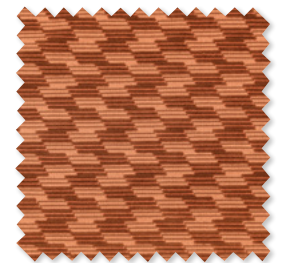
74% WO, 11% PL, 11% CO, 4% PA



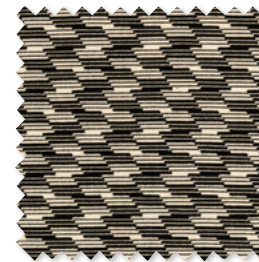
K5368/01



K5368/02



K5368/03



K5368/04



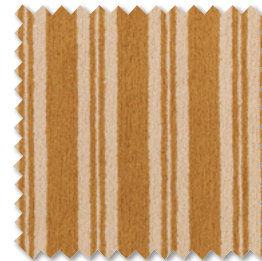
KNIGHT

RECYCLED CHENILLE

Evoking a sense of strength and character, KNIGHT is a two-tone, chunky stripe, woven from a plush blend of recycled cotton chenille with an irresistibly soft touch and contemporary matte finish, reminiscent of a luxuriously fluffy towel.

6 Colours

74% WO, 11% PL, 11% CO, 4% PA



K5364/01



K5364/02



K5364/03



K5364/04



K5364/05



K5364/06



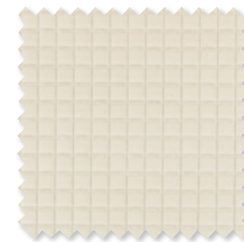
MERLON

DECORATIVE CHENILLE

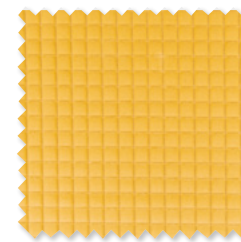
MERLON takes its name from the notched parapets of medieval castles, where the jagged edges offered both defence and a commanding view. The fabric's dense, organic cotton velvet echoes that same strength and structure, with its bold square pattern adding a touch of historic grandeur to any space.

9 Colours

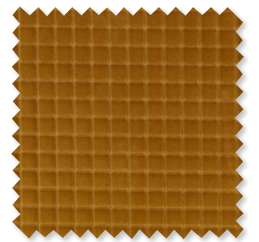
74% WO, 11% PL, 11% CO, 4% PA



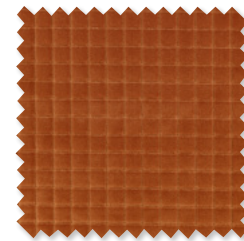
K5361/01



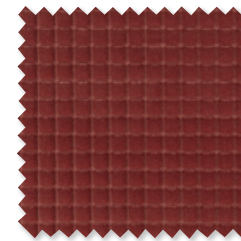
K5361/02



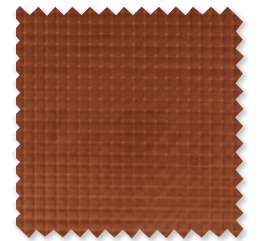
K5361/03



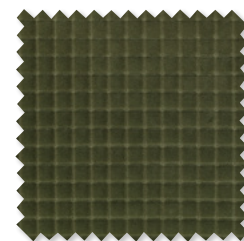
K5361/04



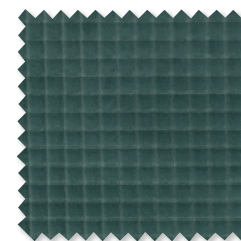
K5361/05



K5361/06



K5361/07



K5361/08



K5361/09

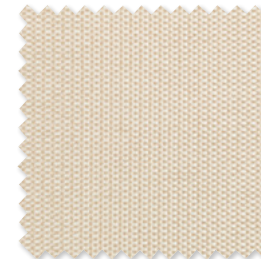
REGAL

RECYCLED BASKET WEAVE

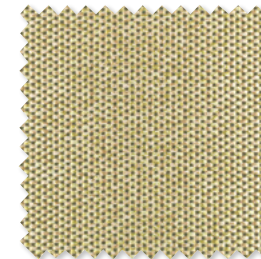
Regal by name, regal by nature, this glamorous basket weave is a blend of the past and future, woven from recycled polyester from waste plastic bottles and recycled cotton from pre-consumer fashion yarns. Its luxe basket weave and metallic finish evoke a quiet, refined glamour, while a befitting jewel-tone palette exudes elegance.

6 Colours

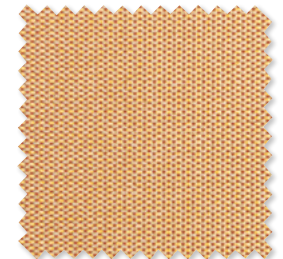
74% WO, 11% PL, 11% CO, 4% PA



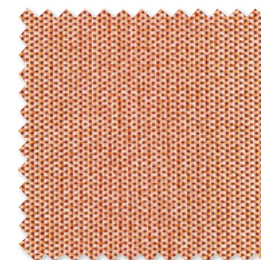
K5363/01



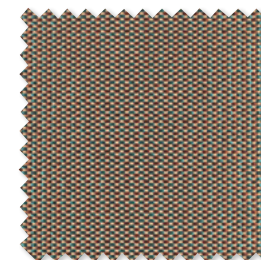
K5363/02



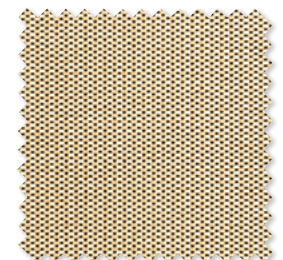
K5363/03



K5363/04



K5363/05



K5363/06

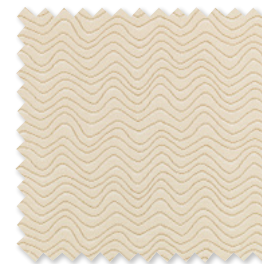
SCROLL

ORGANIC COTTON ÉPINGLÉ WEAVE

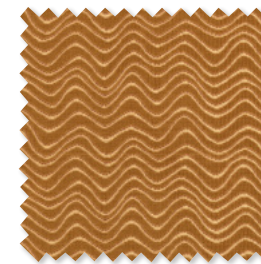
Made from 100% organic cotton, SCROLL features waves of épinglé velvet that undulate across the surface like ornate, flowing handwriting on a scroll creating a truly three-dimensional design. Crafted from 100% organic cotton, the fabric's rich two-tone ground adds depth, while its jewel-toned palette gives the design a modern, almost three-dimensional quality, like a story coming to life.

5 Colours

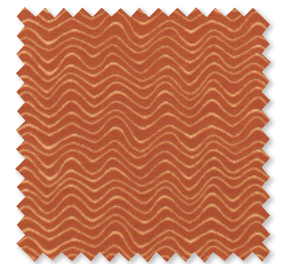
74% WO, 11% PL, 11% CO, 4% PA



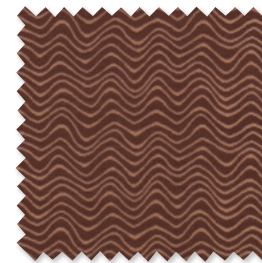
K5365/01



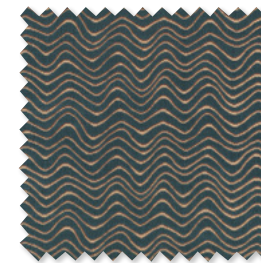
K5365/02



K5365/03



K5365/04



K5365/05

ABOUT US

kirkbydesign

Led by Brand Director, Jordan Mould, influential British interiors brand, Kirkby Design, has a contemporary and sometimes playful approach to innovative design and colour. Creating distinctive textiles from its in-house studio in London, Kirkby Design has also pioneered unique collaborations including the successful Underground collection with Transport for London and with the iconic fashion brand, Eley Kishimoto.

Kirkby Design is part of The Romo Group, a family run business in its fifth generation. The range is available worldwide through an extensive network of selected interior designers and retail outlets.

Please contact us for price information, samples and images, we are also happy to arrange interviews and offer expert commentary from our designers.

UK & International

Iain Niven
iain.niven@romo.com
0207 352 7801

Europe

Roberta Natalini
roberta.natalini@romo.com
+44 (0)1623 727016

USA

Hello PR
romo@hellopr.com
323.452.3310

Sweden

Mia Nordangård
Mia.nordangard@romo.com
08-660 58 22

Germany, Switzerland and Austria

Julia Schaefer
julia.schaefer@romo.com
+49 89 89666 160



kirkbydesign



@KirkbyDesign



Kirkby Design