

kirkbydesign



THROWS

PRESS RELEASE

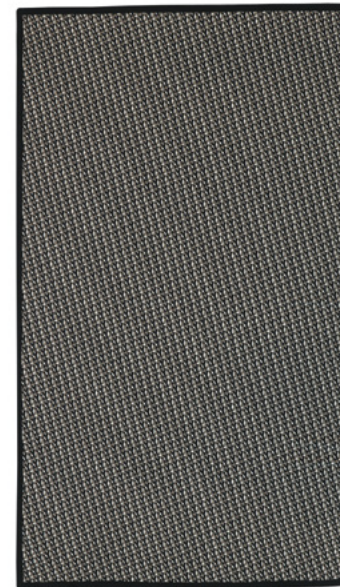


THROWS

Adding to their library of accessories, Kirkby Design has created three new irresistible throws. Two recycled wool throws and a woven, sustainable monogram throw offer an eclectic mix of design and texture created to add cosy comfort.

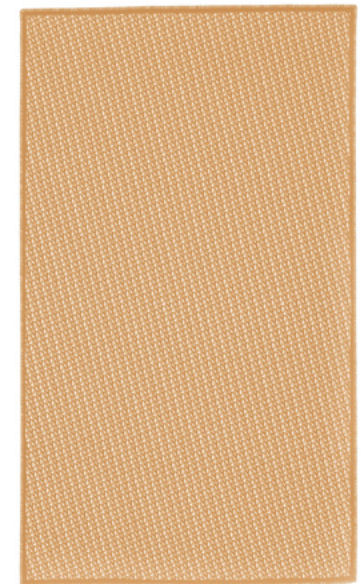
MONOGRAM THROW

A usable geometric with a twist; it may not be apparent on first glance, but this soft cut and uncut velvet is a subtle nod to a monogram of the KD initials. A sustainable throw, Monogram is made from 64% Tencel, which is made from wood pulp, a renewable resource that can be sustainably harvested from forests.



Monogram Monochrome THK5319/01

140cm x 230cm (55.25" x 90.5")



Monogram Bohemia THK5319/02

140cm x 230cm (55.25" x 90.5")

SEGMENT RECYCLED THROW

A trio of fleecy triangles create a contemporary geometric throw, made from 75% recycled wool and 25% recycled polyester from the fashion industry and finished with a blanket stitch edge.



**Segment
Havana**

THK5321/02

150cm x 225cm (59" x 88.5")



**Segment
Monochrome**

THK5320/02

150cm x 225cm (59" x 88.5")

POOL OUTDOOR RECYCLED THROW

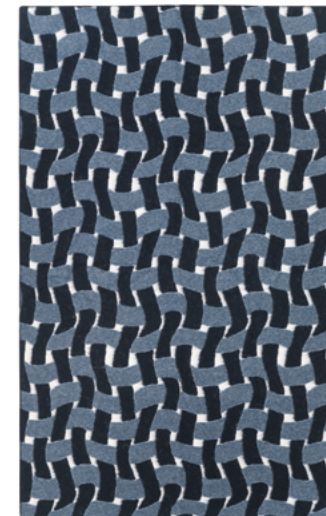
Pool is a bold and graphic statement throw that features a series of undulating lines and curves giving the effect of a regular tile pattern distorted through the water of a swimming pool. Woven from recycled polyester yarns, the throw has been felted giving the design a diffused appearance and movement of colour and finished with a blanket stitch.



**Pool
Havana**

THK5320/02

140cm x 230cm (55.25" x 90.5")



**Pool
Marine**

THK5320/01

140cm x 230cm (55.25" x 90.5")





ABOUT KIRKBY DESIGN

Led by Brand Director, Jordan Mould, influential British interiors brand, Kirkby Design, has a contemporary and sometimes playful approach to innovative design and colour. Creating distinctive textiles from its in-house studio in London, Kirkby Design has also pioneered unique collaborations including the successful Underground collection with Transport for London and with the iconic fashion brand, Eley Kishimoto.

Kirkby Design is part of The Romo Group, a family run business in its fifth generation. The range is available worldwide through an extensive network of selected interior designers and retail outlets.

Please contact us for price information, samples and images, we are also happy to arrange interviews and offer expert commentary from our designers.

UK & International

Iain Niven
iain.niven@romo.com
0207 352 7801

Europe

Roberta Natalini
roberta.natalini@romo.com
+44 (0)1623 727016

Sweden

Mia Nordangård
Mia.nordangard@romo.com
08-660 58 22

South Africa

Laura Miller
Showroom.jhb@romosouthafrica.com
011 262 4167 / 084 614 7672



@KirkbyDesign



kirkbydesign



Kirkby Design