

kirkbydesign

ELEY KISHIMOTO

EDITION II



PRESS RELEASE



'We're excited to continue our journey with Kirkby Design, shaping the world of interiors together. I believe that with the integrity and quality of our relationship, we can continue with our collective vision to make the interior world a prettier, more comfortable space.'

Mark Eley
Eley Kishimoto

Jordan Mould
Brand Director

'For the second time, Kirkby Design has collaborated with Eley Kishimoto on a range of fabrics, wallcoverings and accessories. Bringing together the best of interiors and high fashion, each design captures our expressive aesthetics.'

Wakako Kishimoto
Eley Kishimoto

'We are thrilled and excited to launch our second Kirkby Design x Eley Kishimoto collaboration, the beautiful result of an uncompromising commitment to design integrity and quality.'

kirkbydesign

ELEY KISHIMOTO

EDITION II

Creativity and excellence are paired with humorous fantasy in Kirkby Design's second collaboration with 'the patron saints of print of the fashion world' Eley Kishimoto

A partnership that lasts; Kirkby Design and Eley Kishimoto originally joined forces back in 2017 with a range of textiles and wallcoverings that captured the vibrancy, originality, and personality of both brands.

For 2022, with the same visionary values, the two brands have reunited, taking the collaboration to new sophisticated heights by further exploring Kirkby Design's experimental nature and penchant for extreme textures with Eley Kishimoto's daring and decadent use of colour and pattern.

Distinctive in its eclectic and contemporary appeal, this collection of fabrics, wallcoverings and accessories, effortlessly combine signature graphic designs with innovative textures.



FLASH

Kirkby Design welcomes an Eley Kishimoto signature, the iconic Flash design, to mark their second collaboration.

DECORATIVE WEAVE

With a tactile touch, this eye-catching, decorative design is elevated through distinctive wool bouclé.

7 Colours

58% WO, 35% CO, 7% PA



K5292/01

HANDWOVEN WALLCOVERING

The natural texture of handwoven raffia provides a contemporary backdrop for this digitally printed, strikingly modern design.

7 Colours

This wallcovering is handwoven using natural fibres.



WK820/05



GRAPHIC FAIRYTALE

ÉPINGLÉ WEAVE

With contemporary flair, Origami Rockets fly into a bed of Jagged Roses over a sea of crashing Flash waves.

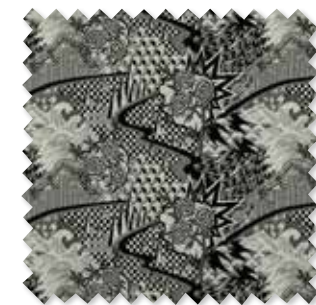
A Kirkby Design Studio fantasy collaboration, Graphic Fairytale is a distinctive and playful hero piece which has everything. Using elements from across the collection to narrate a story, this design is eclectic, retro and yet contemporary. Woven on a traditional loom, a tapestry like quality displays a graphic scene that combines design elements from across the Kirkby Design x Eley Kishimoto II collection.

2 Colours

91% CO, 9% PL



K5290/01



K5290/02

JAGGED ROSES

Not just a pretty face, this floral design of highly stylised roses and thorny geometric shapes offers the perfect hybrid of graphic and organic design.

DECORATIVE VELVET

Elevated by a unique contrast of scale and texture, a bed of sharp, thorny roses is illustrated through a fine cut and uncut cotton velvet. Woven on a traditional loom, this design offers fascinating luxury.

5 Colours

84% CO, 16% PL



K5289/01



HANDWOVEN WALLCOVERING

An unconventional yet beautifully graphic, floral design, digitally printed on textured, handwoven raffia. The organic forms of the roses sit in perfect harmony with the natural, fibrous ground.

6 Colours

This wallcovering is handwoven using natural fibres.



WK821/06

HOME CENTRE

Home Centre takes its inspiration from honeycomb, the iconic structure created by bees. The simple interplay of hexagons and circles uniquely allows for multiple design interpretations in the quintessentially playful style of Eley Kishimoto.

DECORATIVE VELVET

Formed by cut and uncut velvet, geometric shapes create a sophisticated, small-scale design with a satin sheen ground.

8 Colours

92% VI, 8% PL



K5288/06

PRINTED WALLCOVERING

With an unapologetically bold aesthetic, the Home Centre wallcovering sees metallic inks printed onto a natural wood pulp, adding further intrigue and an element of the unexpected in this three-colour design.

6 Colours

Printed with water-based, non-toxic inks

The ground of this wallcovering is made from wood pulp



WK819/04



ORIGAMI ROCKETS

The effect of multiple folded paper aeroplanes in flight is created by an arrangement of basic geometric shapes in a range of muted and colourful shades. Complexity and simplicity characterise an endlessly intriguing design.

DECORATIVE VELVET

A classic returns in an updated palette of six new shades. Offering a strong, contemporary aesthetic, the 3D appearance of the design is accentuated through textured cut and uncut velvet.

7 Colours

92% VI, 8% PL



K5165/07



PRINTED WALLCOVERING

Complexity and simplicity characterise an endlessly intriguing design. A traditional machine is used to print inks which are mixed by skilled craftsman using hand eye coordination onto paper which is made using natural wood pulp.

5 Colours

Printed with water-based, non-toxic inks

The ground of this wallcovering is made from wood pulp



WK806/06



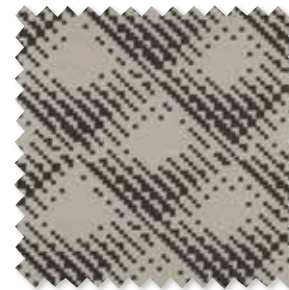
QUILTED MIRAGE

DECORATIVE WEAVE

This quilted pattern creates an abstract, contemporary trompe-l'œil. Pixelated and enlarged, the identity of the geometric pattern only reveals itself from a distance. A luxurious addition, the graphic appeal of this bold, pixelated design is enriched by a sumptuous, soft wool bouclé quality.

3 Colours

74% WO, 11% PL, 11% CO, 4% PA



K5291/01



K5291/02



K5291/03

SOLID

HANDWOVEN WALLCOVERING

The perfect complement to our Flash and Jagged Roses design, this textured plain is presented in a range of contemporary shades. A handwoven, natural raffia wallcovering which creates subtle texture and a stylish statement.

7 Colours

This wallcovering is handwoven using natural fibres.



WK822/01



WK822/02



WK822/03



WK822/04



WK822/06



WK822/07



ABOUT KIRKBY DESIGN

Led by Brand Director, Jordan Mould, influential British interiors brand, Kirkby Design, has a contemporary and sometimes playful approach to innovative design and colour. Creating distinctive textiles from its in-house studio in London, Kirkby Design has also pioneered unique collaborations including the successful Underground collection with Transport for London and with the iconic fashion brand, Eley Kishimoto.

Kirkby Design is part of The Romo Group, a family run business in its fifth generation. The range is available worldwide through an extensive network of selected interior designers and retail outlets.

ABOUT ELEY KISHIMOTO

Established in 1992, London-based print studio Eley Kishimoto have gained global notoriety through a plethora of outputs ranging from fashion, to diverse architectural and design collaborations. Although initially celebrated for their vibrant fashion collections, the company has now become renowned for their ability to decorate everything. Having created designs for top fashion houses including Marc Jacobs, Alexander McQueen and Louis Vuitton, Eley Kishimoto also have their own successful fashion label.

Please contact us for price information, samples and images, we are also happy to arrange interviews and offer expert commentary from our designers.

UK & International

Iain Niven
iain.niven@romo.com
0207 352 7801

Europe

Roberta Natalini
roberta.natalini@romo.com
+44 (0)1623 727016

Sweden

Mia Nordangård
Mia.nordangard@romo.com
08-660 58 22

South Africa

Laura Miller
Showroom.jhb@romosouthafrica.com
011 262 4167 / 084 614 7672



@KirkbyDesign



kirkbydesign



Kirkby Design