

# MARK ALEXANDER

COLLAGE IV  
NATURAL WALLCOVERINGS



PRESS RELEASE

## COLLAGE IV



Collage IV introduces sixteen new masterfully handcrafted designs, each expanding on Mark Alexander's uncompromising pursuit of natural beauty. Exploring a refined architectural sensibility, the collection sees clean lines and sculptural shapes merge to create distinctive designs that captivate.

Meticulously handcrafted using the finest botanical materials, Collage IV is a harmonious blend of artisanal textures and time-honoured techniques. Where abacá, sisal, raffia and banana bark sit alongside traditional Japanese papers, artfully enriched with elegant expressions of embroidery and appliqué to form tactile wallcoverings with decorative appeal.

Presented in a cohesive palette, where signature, understated tones offer effortless versatility whilst rich colour washes intensify the organic nature of the irregular grounds, introducing a unique sense of character and charm to interiors.

LEVANT | 3 Colours

A striking linear design formed from interlocking embroidered squares in natural jute, Levant is a highly tactile wallcovering embodying a rich sense of colour movement.



MW168/01



MW168/02



MW168/03

ACCENT | 3 Colours

An understated design which sees braided strands of water hyacinth appliquéd and placed by hand onto a patchwork abacá ground, Accent introduces a distinct sense of linear movement to interiors.



MW172/01



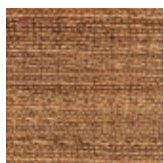
MW172/02



MW172/03

TRESSAGE | 1 Colour

A natural statement for walls, Tressage sees coarse strands of banana bark braided alongside thick, twisted yarns of abaca to form a beautiful wallcovering with a strongly variegated sense of texture and tone.



MW165/02

BRAID | 1 Colour

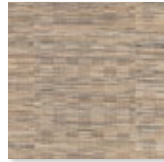
Strands of raffia are braided by hand and thoughtfully assembled to form an intricate mosaic design, introducing rich textural interest to walls.



MW174/01

RIAD | 1 Colour

Coarse strands of banana bark are basket woven by hand and assembled to craft a distinctive mosaic design with an intriguing sense of colour movement.



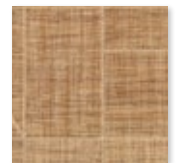
MW173/01

QUATRO | 3 Colours

Cut pieces of handwoven grasscloth are artfully embroidered with an overlapped stitch and assembled by hand to form an intricate mosaic design, introducing architectural nuance to interiors.



MW166/01



MW166/02



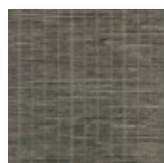
MW166/03

PARTITION | 3 Colours

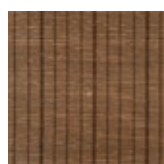
Featuring a subtle vertical stripe, Partition is crafted using paper and raffia yarns which are hand dyed, hand twisted and woven to form a tactile and highly versatile wallcovering.



MW171/02



MW171/03



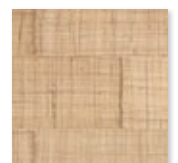
MW171/04

SYNAMAY | 3 Colours

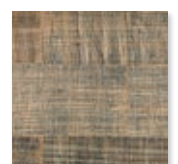
An open weave formed from coarse strands of abacá mounted onto coloured paper, linear movement and rhythm is introduced through hand embroidery in natural jute.



MW167/01



MW167/02



MW167/03

### BOHEME | 4 Colours

Japanese crumpled papers which have been hand-coloured and mounted on a paper backing are embroidered with a complex linear design, forming a unique wallcovering which is rich in tactile appeal.



MW169/03



MW169/01



MW169/02



MW169/04

### MOTIF | 4 Colours

A staple from the Mark Alexander fabric library reworked as a wallcovering; Motif sees a gentle geometric embroidery formed from lustrous stitches introduce an elegant sheen to the textured sisal ground.



MW162/04



MW162/01



MW162/02



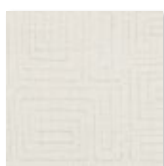
MW162/03

### KUBA | 4 Colours

Kuba combines a linear display of embroidery with rich colourwashes, intensifying the organic texture of the handwoven raffia ground.



MW161/02



MW161/01



MW161/03



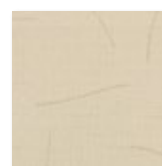
MW161/04

### GESTURE | 3 Colours

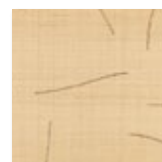
Artfully embroidered with an irregular stitch design, intriguing lines and gentle curves are elegantly introduced to this handwoven raffia wallcovering.



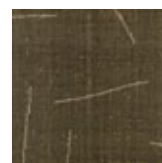
MW160/04



MW160/01



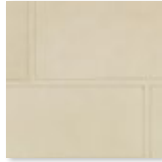
MW160/02



MW160/04

### FUSUMA | 3 Colours

Drawing inspiration from the clean lines used in Japanese room separation screens, interlocking stitched squares are elegantly embroidered by hand onto crumpled papers, forming a distinctive contemporary design with architectural appeal.



MW170/01



MW170/02



MW170/03

### EVOKE | 3 Colours

Yarns of raffia, paper and hand spun cotton are dyed and intricately woven to form a beautifully textured wallcovering whilst knotted yarns of water hyacinth add a unique sense of tactile charm..



MW164 /01



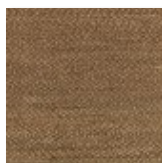
MW164 /02



MW164 /03

### PLAIT | 1 Colour

Two tone raffia yarns are intricately braided by hand before being woven to form a striking wallcovering, rich in textural interest.



MW146/01

### MARELLE | 3 Colours

Exuding architectural elegance, Japanese paper yarns are intricately handwoven and dyed to form linear detailing at an impressive scale whilst hand knotted raffia adds intriguing tactile appeal.



MW163/02



MW163/03



MW163/04



## ABOUT US

Mark Alexander has established a reputation for creating the finest textiles and wallcoverings using natural materials. Led by Head of Brand Mark Butcher, the studio creates fabrics and wallcoverings that are not opulent or fussy, nor led by transient fashion, but are true to the natural materials from which they are made.

Mark Alexander is part of The Romo Group, a family run business in its fifth generation. The range is available worldwide through an extensive network of selected interior designers and retail outlets.

Please contact us for price information, samples and images, we are also happy to arrange interviews and offer expert commentary from our designers.

## UK

Iain Niven  
iain.niven@romo.com  
0207 352 7801

## Europe

Roberta Natalini  
roberta.natalini@romo.com  
+44 (0)1623 727016

## USA

Hello PR  
romo@hellopr.com  
323.452.3310

## USA

Hello PR  
romo@hellopr.com  
323.452.3310

## Sweden

Mia Nordangård  
mia.nordangard@romo.com  
08-660 58 22



MARKALEXANDER.COM  
THE ROMO GROUP