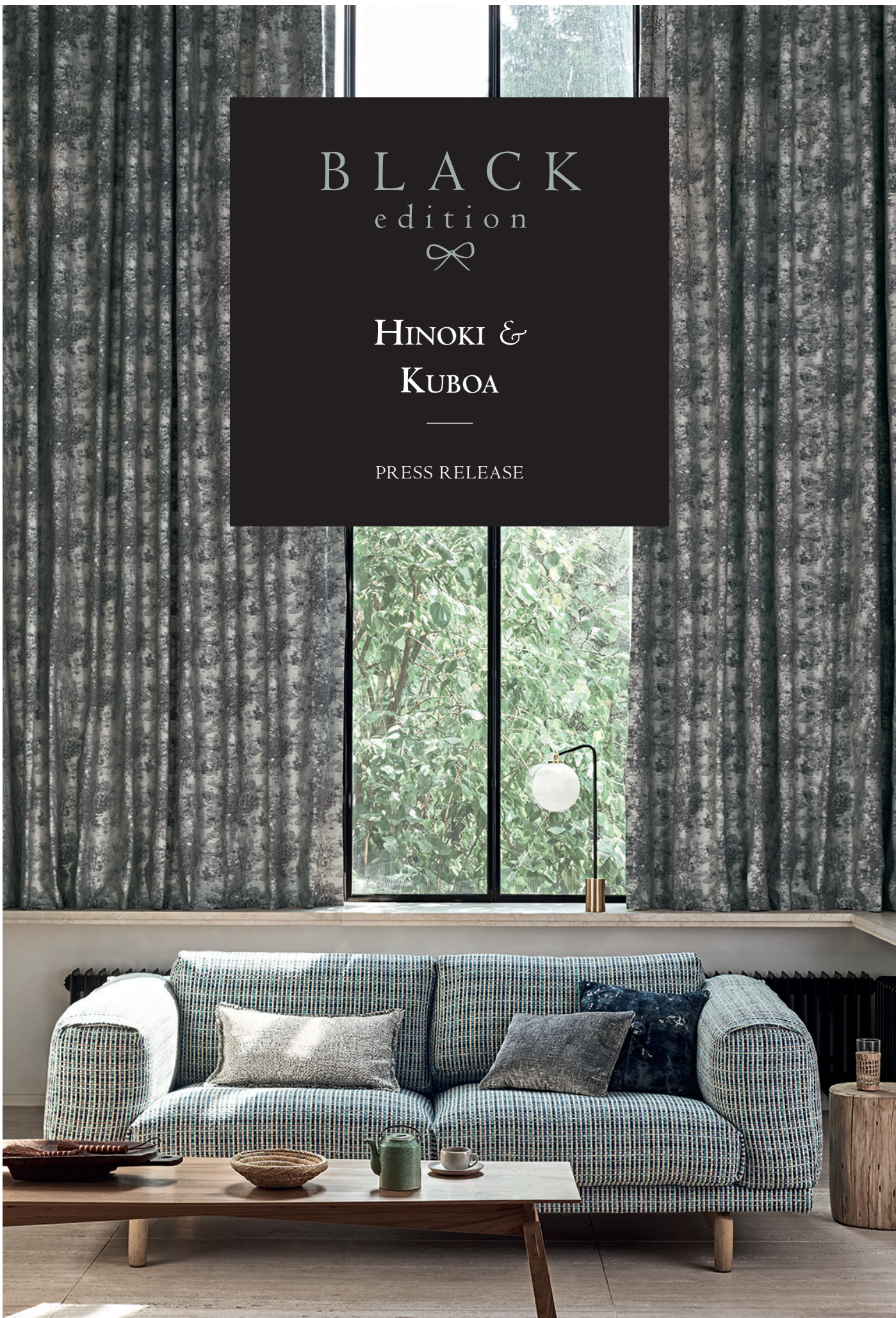


BLACK
edition
∞

HINOKI &
KUBOA

PRESS RELEASE



HINOKI & KUBOA

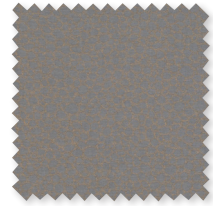
Inspired by the work of Japanese woodcut artist, Katsutoshi Yuasa, the Hinoki and Kuboa collections see indulgent textures, natural forms and a purifying palette masterfully combine.



Hinoki

Decorative Sheers and Weaves

New weaving techniques form intricate shadows and unique qualities in Hinoki, a serene collection of elegant sheers and lightweight fabrics. Highlights include the Katsura Sheer that features an intriguing devoré technique that advances along the cloth, and Mizumi which offers a dramatic large-scale interpretation of one of Katsutoshi Yuasa's striking landscape scenes, presented on a pure linen.



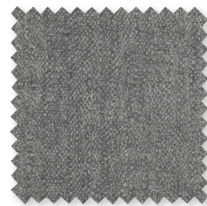
Chiyoko
Wide-Width
Lightweight Weave

3 Colours



Kiri
Wide-Width
Semi-Sheer

5 Colours



Suzu
Wide-Width
Lightweight Weave

4 Colours



Katsura Sheer
Wide-Width
Devoré Sheer

4 Colours



Hinoki
Wide-Width
Jacquard Weave

5 Colours



Yasani
Wide-Width
Semi-Sheer

3 Colours



Yuki
Wide-Width
Devoré

5 Colours



Akemi
Wide-Width
Jacquard Weave

2 Colours



Utsuro
Jacquard Weave

4 Colours



Mizumi
Printed Wide-Width
Linen

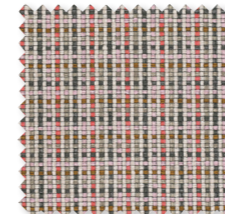
2 Colours



Kuboa

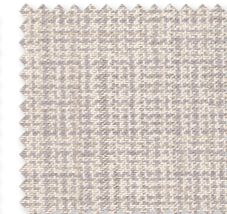
Textured Weaves

Luxurious cut velvets, modern weaves and textural semi-plains are united by a contemporary, atmospheric palette in Kuboa, a sophisticated collection of decorative upholstery weaves. Romita, a jacquard velvet featuring an abstract geometric design reminiscent of natural rock formations and Aiko, a textured weave woven from a mix of innovative knitted yarns that create a distinct design are just two of the highlights from this collection.



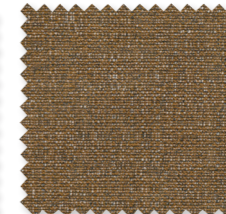
Kuboa
Textured Weave

4 Colours



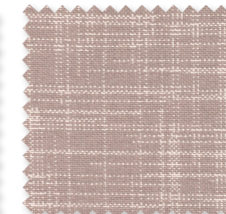
Aiko
Textured Weave

4 Colours



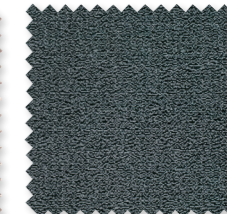
Tiko
Textured Weave

7 Colours



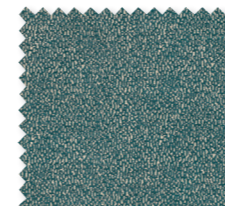
Kanti
Textured Weave

4 Colours



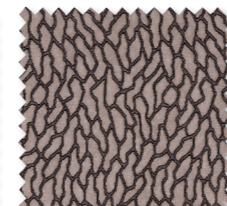
Chana
Semi – Plain Velvet

4 Colours



Pikati
Jacquard Velvet

5 Colours



Romita
Jacquard Velvet

6 Colours



Nishi
Jacquard Velvet

7 Colours



Tulua
Textured Chenille Weave

2 Colours



About Black Edition

Infused with rich, contemporary elegance Black Edition led by Design Director Emily Mould, has continued to forge its own unique identity. Creating designs with a distinctive, edgy style and characteristic colour palette, Black Edition continues to establish itself as a trendsetting brand in the world of high-end interiors.

About the Collaboration:

Katsutoshi Yuasa is a Tokyo-born artist known for his large, scenic woodcut prints crafted from his own digital photography. He received a BA degree in Fine Art, painting and printmaking from Musashino Art University in Tokyo, and later went on to complete his MA at the Royal College of Art in London.

Black Edition is part of The Romo Group, a family run business in its fifth generation. The range is available worldwide through an extensive network of selected interior designers and retail outlets.

Please contact us for price information, samples and images, we are also happy to arrange interviews and offer expert commentary from our designers.

Europe

Beatrice Bonzi
beatrice.bonzi@romo.com
+44 (0)1623 727000

UK

Iain Niven
iain.niven@romo.com
0207 352 7801

USA

Tamar Mashigian
tamar@cdecor.com
310-276-5001

