

BLACK  
edition  
∞

MIZUMI  
*Fabrics & Wallcoverings*

—  
PRESS RELEASE





# MIZUMI *Fabrics & Wallcoverings*

Embarking on an exploration of time-honoured Japanese printmaking practises, the latest offering from Black Edition sees traditional and contemporary techniques intertwine through a collaboration with prominent Japanese woodcut artist Katsutoshi Yuasa

A true master of his craft, Katsutoshi Yuasa begins a ritualistic journey that unfolds and evolves during his artistic process. Using digital images curated from his own camera, Katsutoshi creates intricate woodcut prints methodically crafted with small carving tools, a complex and time-consuming process. Once these meticulous pieces are complete, he uses an entirely manual printing method to create his artwork on delicate washi paper.

Using the expertise of our in-house design team, Katsutoshi Yuasa's artwork has been reimagined to create Mizumi, a collection of decorative prints, weaves and wallcoverings that embrace oriental design and ancient craft in a modern and elegant way.



*'We were immediately drawn to Katsutoshi Yuasa's work and the unique process that he uses to create each piece. The woodcut technique gives undeniable intricacy, which we believed could be reimagined and brought to life on an assortment of beautiful textures.'*

**Emily Mould,**  
Black Edition Design Director



## MIZUMI PRINTS AND WEAVES

10 designs

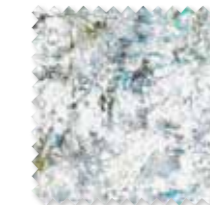
Otaru and Kensu are suitable for upholstery and accessories.

Mitoku, Tomoko Velvet and Hanawa Jacquard are suitable for drapes, upholstery and accessories.

Katsura, Tomoko, Narita, Hanawa and Mizumi are suitable for drapes and accessories.



Otaru - 3 Colours Jacquard Velvet



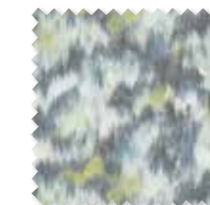
Katsura - 2 Colours Printed Linen Satin



Tomoko - 3 Colours Printed Linen Satin



Hanawa Jacquard - 2 Colours Printed Jacquard Velvet



Hanawa - 2 Colours Printed Jacquard Weave



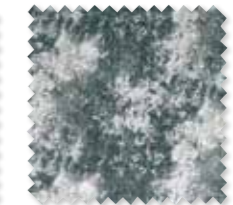
Narita - 2 Colours Printed Jacquard Weave



Tomoko Velvet - 3 Colours Printed Velvet



Mitoku - 1 Colour Jacquard Weave



Kensu - 3 Colours Printed Jacquard Velvet



Mizumi - 2 Colours Printed Wide-Width Linen

## MIZUMI WALLCOVERINGS

7 designs

All rolls are 10.05mx70cm apart from Hanawa & Mitoku which are 10.05mx68cm. Mizumi is a 320cm high x 411cm wide wall panel / mural made up of six drops.

All wallcoverings are paste the wall.



Mitoku Wallcovering  
6 Colours



Utsuro Wallcovering  
5 Colours



Hanawa Wallcovering  
3 Colours



Katsura Wallcovering  
3 Colours



Tomoko Wallcovering  
2 Colours



Mizumi Wallcovering  
4 Colours



Opus Wallcovering  
10 Colours





## About Black Edition

Infused with rich, contemporary elegance Black Edition led by Design Director Emily Mould, has continued to forge its own unique identity. Creating designs with a distinctive, edgy style and characteristic colour palette, Black Edition continues to establish itself as a trendsetting brand in the world of high-end interiors.

## About the Collaboration:

Katsutoshi Yuasa is a Tokyo-born artist known for his large, scenic woodcut prints crafted from his own digital photography. He received a BA degree in Fine Art, painting and printmaking from Musashino Art University in Tokyo, and later went on to complete his MA at the Royal College of Art in London.

Black Edition is part of The Romo Group, a family run business in its fifth generation. The range is available worldwide through an extensive network of selected interior designers and retail outlets.

Please contact us for price information, samples and images, we are also happy to arrange interviews and offer expert commentary from our designers.

### Europe

Beatrice Bonzi  
beatrice.bonzi@romo.com  
+44 (0)1623 727000

### UK

Iain Niven  
iain.niven@romo.com  
0207 352 7801

### USA

Tamar Mashigian  
tamar@cdecor.com  
310-276-5001

