



BLACK  
edition



MUOTO

*Textured Weaves*

PRESS RELEASE

# MUOTO

*Textured Weaves*

---

Muoto is a sensorial album of distinctive designs that effortlessly pairs indulgent bold textures with impactful pattern.

A form of alchemy, each quality combines a mix of textural yarns that offer intrigue; characterful bouclé, indulgent velvet, soft chenille, and luxurious silk all play a part in creating an irresistible array of fabrics. Semi-plains, large-scale geometrics, and intricate patterns offer a harmonious blend of subtlety and statement, while an inviting palette accentuates the enduring nature of the designs.



# Takao

*Printed Velvet*

A play between textures, soft velvet breaks through a luxurious metallic print with a mesmerising movement of tonal colour, creating a striking, block geometric with a linear profile.

Suitable for drapes, upholstery and accessories

4 colours



9122/02



9122/03



# Boa

*Silk Jacquard Weave*

Boa offers opulence in abundance. A pure silk satin surface, reminiscent of liquid gold, depicts a tranquil scene of undulating waves that gives a subtle movement and charming texture to the cloth.

Suitable for drapes and accessories

5 colours



9123/04



9123/05



# Oriku

*Textured Bouclé Weave*

A textural work of art, undulating waves of chunky bouclé create a three-dimensional scene of calm and tranquillity with an irresistible tactility.

Suitable for upholstery and accessories

5 colours



9130/04



9130/05



# Muoto

*Textured Bouclé Weave*

A characterful combination of texture and colour, Muoto is a bold display of design that depicts a striking chevron through alternating shapes of soft chenille and tactile bouclé, artistically felted for maximum impact.

Suitable for upholstery and accessories

4 colours



9125/01



9125/04



# Samar

*Textured Bouclé Weave*

Organic in appearance and texture, Samar is an irregular, stepped chevron bouclé that sits upon a softly ribbed ground, peppered with a hint of metallic.

Suitable for drapes, upholstery and accessories

2 colours



9126/01



9126/02



# Arku

*Jacquard Weave*

Tailored to perfection, bold, irregular blocks of contemporary colour come together to form a striking geometric.

Suitable for drapes, upholstery and accessories

4 colours



9133/01



9133/04



# Zuri

*Textured Bouclé Weave*

A chunky bouclé yarn with an intriguing character, interplays with a smooth, lustrous yarn to form an irregular, stepped design with a charming contrast.

Suitable for upholstery and accessories

4 colours



9124/03



9124/04



# Eris

*Textured Weave*

Irregular, bobbly stripes of textural bouclé contrast against a lustrous, tonal satin ground, creating a dimensional, small-scale weave.

Suitable for upholstery and accessories

4 colours



9131/03



9131/04



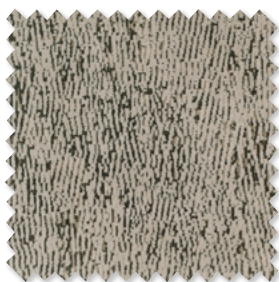
# Ashi

*Jacquard Velvet*

Reminiscent of the intricacies of tree bark, Ashi is a captivating cut and uncut velvet that exudes an organic charm with an elegant appearance.

Suitable for drapes, upholstery and accessories

4 colours



9132/01



9132/04



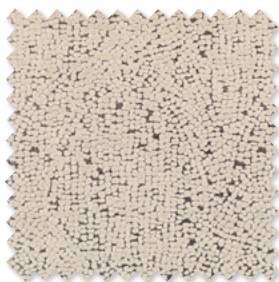
# Atira

*Jacquard Velvet*

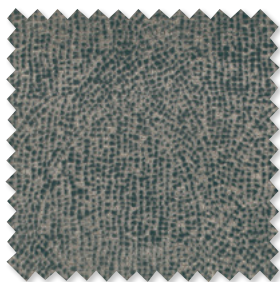
Inspired by the intricacies of an ancient mosaic floor, this lustrous velvet depicts an all-over, small-scale pattern, woven on a shimmering ground of metallic, revealing a subtle arch design.

Suitable for drapes, upholstery and accessories

4 colours



9127/01



9127/04



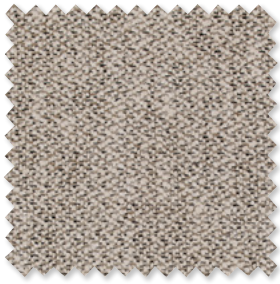
# Piota

*Textured Bouclé Weave*

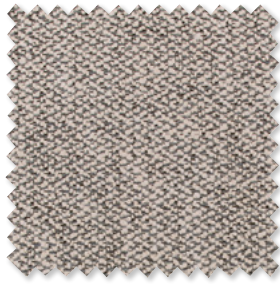
Exceedingly soft, a chunky bouclé yarn with a natural elegance forms an irregular, textured weave of neutral tones with a unique peppered appearance.

Suitable for upholstery and accessories

2 colours



9128/01



9128/02



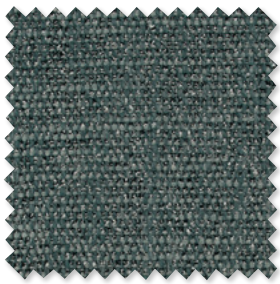
# Ocro

*Textured Bouclé Weave*

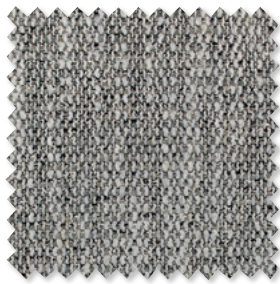
Ocro combines loosely twisted bouclé, and spun yarns in a multi-tonal palette to create a chunky tactile weave with a beautifully soft finish.

Suitable for upholstery and accessories

4 colours



9129/03



9129/01





# Cushions



**Muoto Stucco**  
Cover: Textured Bouclé Weave

RBC153/01  
60x40cm (23.5"x15.75")



**Muoto Wakame**  
Cover: Textured Bouclé Weave

RBC153/02  
60x40cm (23.5"x15.75")



**Muoto Mehndi**  
Cover: Textured Bouclé Weave

RBC153/03  
60x40cm (23.5"x15.75")



**Ashi Avocet**  
Cover: Jacquard Velvet

RBC158/01  
50x50cm (19.75"x19.75")



**Ashi Teal**  
Cover: Jacquard Velvet

RBC158/02  
50x50cm (19.75"x19.75")



**Ashi Copper**  
Cover: Jacquard Velvet

RBC158/03  
50x50cm (19.75"x19.75")



**Arku Copper**  
Cover: Jacquard Weave

RBC159/01  
60x40cm (23.5"x15.75")



**Arku Halite**  
Cover: Jacquard Weave

RBC159/02  
60x40cm (23.5"x15.75")



**Arku Olive**  
Cover: Jacquard Weave

RBC159/03  
60x40cm (23.5"x15.75")



**Ocro Caspian**  
Cover: Textured Bouclé Weave

RBC155/01  
50x50cm (19.75"x19.75")



**Ocro Shadow**  
Cover: Textured Bouclé Weave

RBC155/02  
50x50cm (19.75"x19.75")



**Ocro Mehndi**  
Cover: Textured Bouclé Weave

RBC155/03  
50x50cm (19.75"x19.75")



**Oriku Calico**  
Face: Textured Bouclé Weave  
Reverse: Semi-Plain Weave

RBC156/01  
50x50cm  
(19.75"x19.75")



**Oriku Wakame**  
Face: Textured Bouclé Weave  
Reverse: Semi-Plain Weave

RBC156/02  
50x50cm  
(19.75"x19.75")



**Oriku Mineral**  
Face: Textured Bouclé Weave  
Reverse: Semi-Plain Weave

RBC156/03  
50x50cm  
(19.75"x19.75")



**Oriku Halite**  
Face: Textured Bouclé Weave  
Reverse: Semi-Plain Weave

RBC156/04  
50x50cm  
(19.75"x19.75")



**Takao Thunder**  
Face: Printed Velvet  
Reverse: Semi-Plain Weave

RBC152/01  
50x50cm  
(19.75"x19.75")



**Takao Malva**  
Face: Printed Velvet  
Reverse: Semi-Plain Weave

RBC152/02  
50x50cm  
(19.75"x19.75")



**Takao Indium**  
Face: Printed Velvet  
Reverse: Semi-Plain Weave

RBC152/03  
50x50cm  
(19.75"x19.75")



**Takao Spice**  
Face: Printed Velvet  
Reverse: Semi-Plain Weave

RBC152/04  
50x50cm  
(19.75"x19.75")



**Eris Calico**  
Cover: Textured Weave

RBC157/01  
60x40cm (23.5"x15.75")



**Eris Jadeite**  
Cover: Textured Weave

RBC157/02  
60x40cm (23.5"x15.75")



**Eris Spice**  
Cover: Textured Weave

RBC157/03  
60x40cm (23.5"x15.75")



**Samar Calico**  
Face: Textured Bouclé Weave  
Reverse: Semi-Plain Weave

RBC154/01  
60x40cm (23.5"x15.75")

## About Black Edition

Exclusive, luxurious, prestigious; Black Edition has made its mark on the interiors market as a forward thinking, avantgarde design house of fabrics, wallcoverings, and accessories. Experimental with qualities, techniques, and design in a considered, individual way, Black Edition creates haute couture collections for the interiors industry.

Black Edition is part of The Romo Group, a family run business in its fifth generation. The range is available worldwide through an extensive network of selected interior designers and retail outlets.

Please contact us for price information, samples and images, we are also happy to arrange interviews and offer expert commentary from our designers.

### UK

Iain Niven  
iain.niven@romo.com  
0207 352 7801

### Sweden

Mia Nordangård  
Mia.nordangard@romo.com  
08-660 58 22

### Holland

Hester van der Reijden  
hester.vanderreijden@romo.com  
030 6053218

### Europe

Roberta Natalini  
roberta.natalini@romo.com  
+44 (0)1623 727016

### South Africa

Laura Miller  
Showroom.jhb@romosouthafrica.com  
011 262 4167 / 084 614 7672



BlackEditionbyRomo



blackedition\_byromo



BlackEdition\_byRomo

