

# ROMO

## AUBIN WALLCOVERINGS

---

*Press Release*





# AUBIN WALLCOVERINGS

---

Introducing Aubin Wallcoverings, a joyful celebration of pattern on pattern, marking the brand's exploration of a more classical aesthetic.

Inspired by pivotal design movements such as the Bloomsbury Group and the richly layered patterns of Charleston Farmhouse, their historic meeting place, the Aubin Wallcoverings collection is a bold tribute to timeless English design.

A curated and playful selection of surface-printed and rotary-printed papers, crafted in England, this collection tells a story of pattern making and the rich history behind this wonderful craft. Influenced by traditional block printing techniques, each design was originally hand carved and hand printed, cherishing the perfect imperfections that make them unique.

Masterfully capturing and skilfully recreating the subtle relief in the print mark through the medium of surface printing, richly pigmented inks rest on the surface of the paper, creating a gentle raised texture that is both beautifully chalky in appearance and to the touch. Designs include small-scale geometrics, classic stripes and nature inspired patterns, all in a refined and fresh palette that brings an element of lightness to the collection, ensuring it remains highly versatile and subtly present.







AUBIN  
WALLCOVERING



W472/01



W472/02



W472/03



W472/04

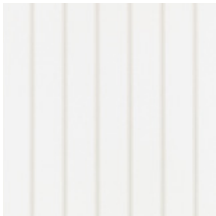


W472/05



W472/06

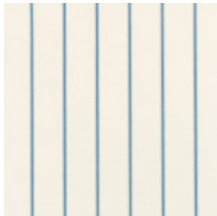
ALMA  
WALLCOVERING



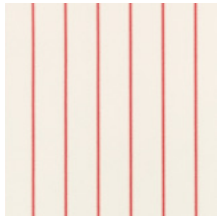
W473/01



W473/02



W473/03



W473/04



W473/05

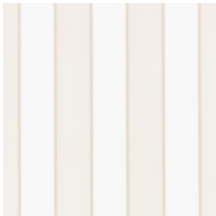


W473/06



W473/07

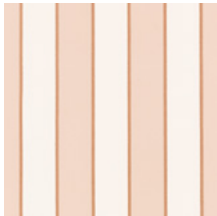
ORSIN  
WALLCOVERING



W474/01



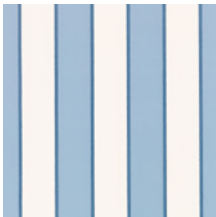
W474/02



W474/03



W474/04

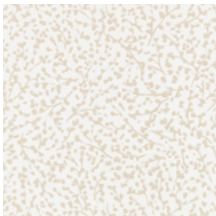


W474/05



W474/06

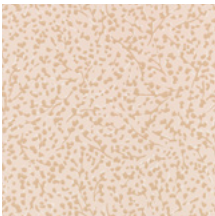
ELENI  
WALLCOVERING



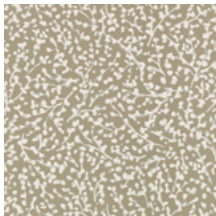
W475/01



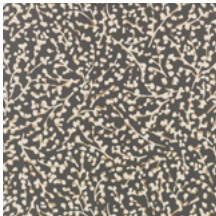
W475/02



W475/03



W475/04



W475/05

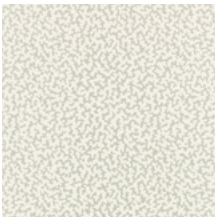
JUNIE  
WALLCOVERING



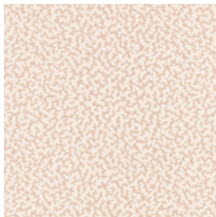
W476/01



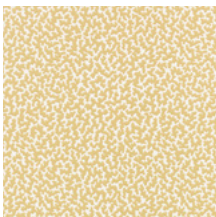
W476/02



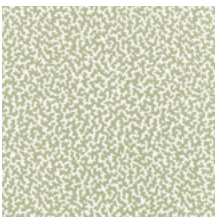
W476/03



W476/04



W476/05



W476/06

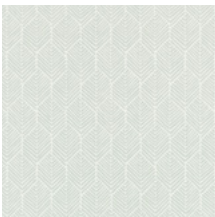
REMI  
WALLCOVERING



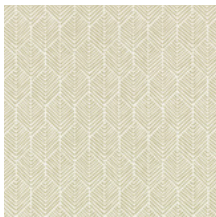
W477/01



W477/02



W477/03



W477/04

KEZIA  
WALLCOVERING



W478/01



W478/02



W478/03



W478/04



## About Romo

The founding brand of The Romo Group, Romo is renowned for its assorted library of classic and contemporary designs and versatile plains, offering a diverse style and timeless elegance enriched with a sophisticated colour palette.

Led by Director of Design and Excellence Emily Mould, the Romo studio is a continuous hub of activity and creativity. An Aladdin's cave of sketches, paintings, fabric and colour charts, the studio walls are a constant source of inspiration. Each launch the designers research new ideas, finding inspiration in an array of influences from travel and fashion to nature and the outdoors.

Romo is part of The Romo Group, a family run business in its fifth generation. The range is available worldwide through an extensive network of selected interior designers and retail outlets.

Please contact us for price information, samples and images, we are also happy to arrange interviews and offer expert commentary from our designers.

### UK

Iain Niven  
iain.niven@romo.com  
0207 352 7801

### Europe

Roberta Natalini  
roberta.natalini@romo.com  
+44 (0)1623 727016

### Deutschland, Österreich, Schweiz

Julia Schäfer  
Julia.schaefer@romo.de  
+49 (0)89 89 666 171

### USA

Hello PR  
romo@hellopr.com  
323.452.3310

### Scandinavia

Mia Nordangård  
Mia.nordangard@romo.com  
08-660 58 22



romo\_fabrics



romofabrics



Romo\_Fabrics

