

# VILLA NOVA

*Contract Collections*



PRESS RELEASE 2016



## Performance, Style and Reassurance



Villa Nova announces the launch of their first contract focused collections, which feature sheer, drapery and upholstery fabrics designed specifically for the contract and hospitality sector.

The collections offer a range of coordinated designs that meet the needs of any hospitality design project but are also suitable for stylish residential schemes. All fabrics are inherently fire retardant and designed to meet stringent international contract standards. Available in the UK from November 2016 and internationally from January 2017.

---

### ROCHE

Wide-Width Trevira CS Sheers and Weaves

### MIRA

Trevira CS Velvet

### MARL

Trevira CS Plain Weave

### ELYSIUM

Wide-Width Trevira CS Weaves

### STRATA

Wide-Width Trevira CS Dimout

### BIJOU

Wide-Width FR Satin

### OSCURO

Wide-Width FR Blackouts

### BERGEN

Wide-Width Trevira CS Sheers



# ROCHE

## Wide-Width Trevira CS Sheers

The Roche collection exudes an atmosphere of luxurious style with a hint of urban chic. This collection of easy care Trevira CS fabrics mixes intriguing textures and modern patterns with an elegant fluidity.



Islet  
11 Colours



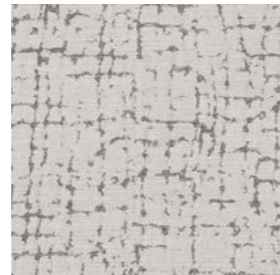
Piega  
6 Colours



Metallo  
5 Colours



Gradient  
5 Colours



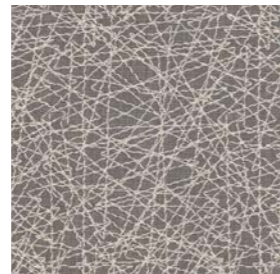
Breccia  
6 Colours



Roche  
6 Colours



Fleuri  
3 Colours



Arris  
4 Colours

## ATTRIBUTES

- 100% Trevira CS
- Fire retardant
- Washable
- Wide-Width
- Contract drapes & accessories
- 8 designs





---

# MIRA

## Trevira CS Velvet

A fabulous crushed velvet with a luxurious pile that is soft to the touch. Mira drapes perfectly and is also immensely durable for upholstery. This sumptuous velvet has been coloured in an array of versatile shades.

---

### ATTRIBUTES

- 100% Trevira CS
- Fire retardant
- Contract upholstery, drapes & accessories
- 37 colours



---

# MARL

## Trevira CS Plain Weave

A chic, Trevira CS plain with the look and feel of wool. Marl has a subtle melange effect that gives character and movement to this versatile fabric. Designed for smart upholstery and luxurious curtains.

---

### ATTRIBUTES

- 100% Trevira CS
- Fire retardant
- Contract upholstery, drapes & accessories
- 28 colours

---

# ELYSIUM

## Wide-Width Trevira CS Weaves

A sophisticated collection of lightweight Trevira CS fabrics that combine appealing textures with modern elegance. Carefully co-ordinated muted and neutral shades coupled with tactile nuances of texture characterise this timeless and atmospheric collection.



Diffuse  
8 Colours



Enigma  
5 Colours



Ethereal  
6 Colours



Elysium  
5 Colours



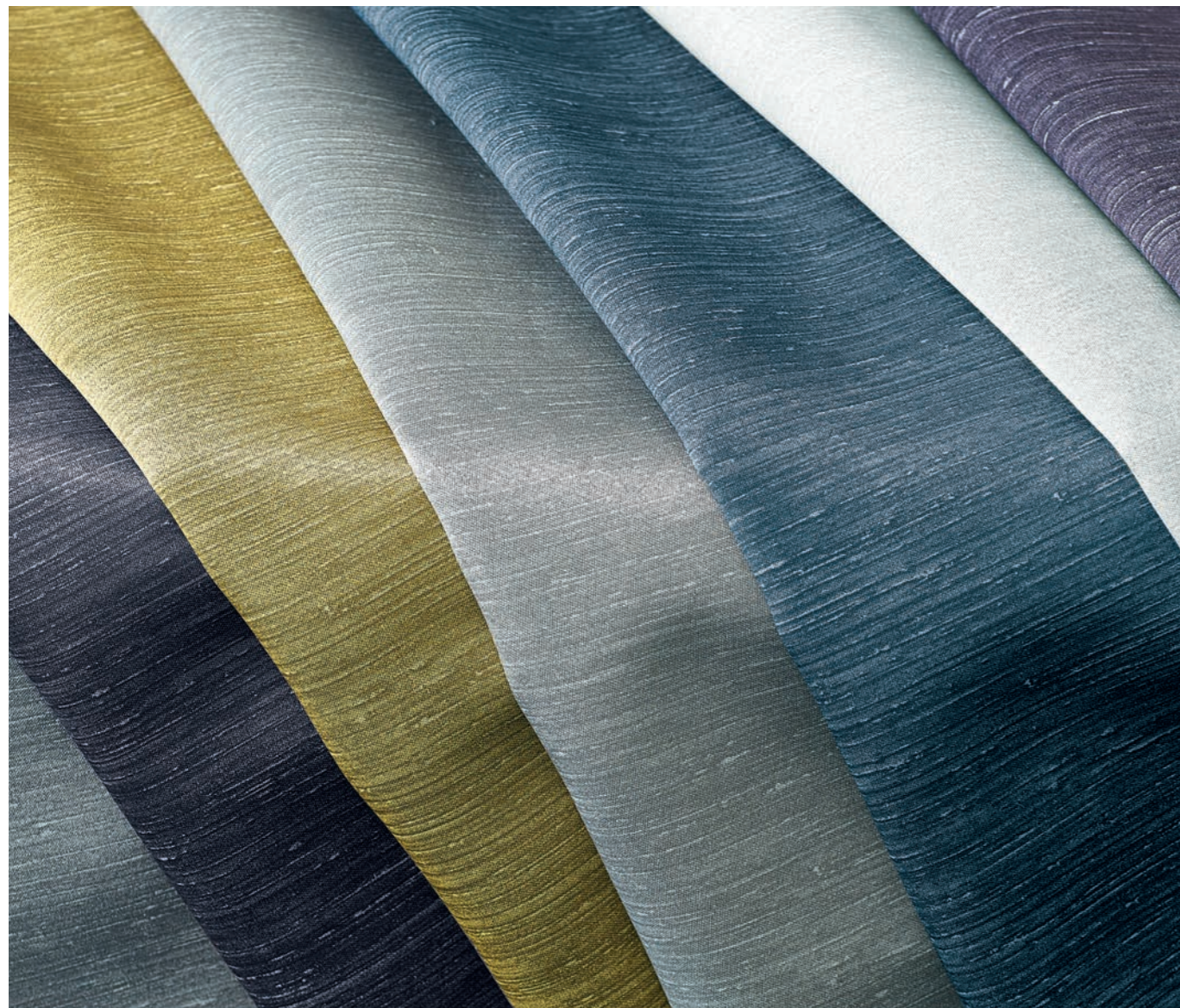
Ambient  
6 Colours

---

## ATTRIBUTES

- 100% Trevira CS
- Fire retardant
- Washable
- Wide-Width
- Contract drapes & accessories
- 5 designs





---

# STRATA

## Wide-Width Trevira CS Dimout

Strata is a modern Trevira CS wide-width satin dimout with a sleek, supple finish and a subtle, printed linear texture.

---

### ATTRIBUTES

- 100% Trevira CS
- Fire retardant
- Dimout - blocks out 99.6% of light
- Washable
- Wide-width
- Contract drapes, blinds & accessories
- 23 colours



---

# BIJOU

## Wide-Width FR Satin

A silky smooth, wide-width plain satin that is fire retardant and fully washable. With a sumptuous drape and impressive lustre this elegant satin offers glamour and luxury to drapes cushions, accessories and bed spreads.

---

### ATTRIBUTES

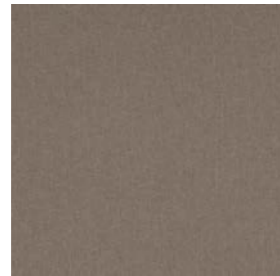
- Fire retardant
- Washable
- Wide-width
- Contract drapes, bed covers & accessories
- 43 colours

---

# OSCURO

## Wide-Width FR Blackouts

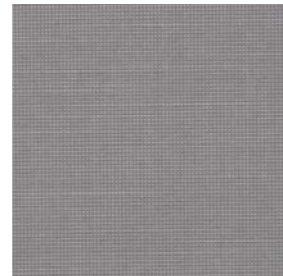
Oscuro is an essential collection of stylish, fire retardant blackout fabrics in a sophisticated colour palette. These blackout fabrics block out daylight completely and are perfect for both commercial and residential use.



Moonlight  
7 Colours



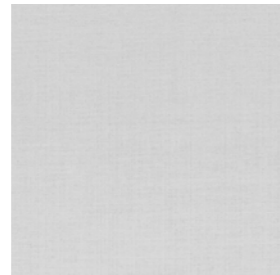
Dusk  
12 Colours



Starlight  
13 Colours



Oscuro  
12 Colours



Sirca  
1 Colour

---

## ATTRIBUTES

- Fire retardant
- 100% Blackout
- Washable
- Wide-Width
- Contract drapes & blinds
- 5 designs, including an energy reflecting blackout



---

# BERGEN

## Wide-Width Trevira CS Sheers

A versatile collection of two wide-width, flame retardant sheer fabrics with subtle colourations and soft, lustrous finishes; perfect for elegant drapes for both domestic and commercial applications.



Alta  
16 Colours



Bergen  
30 Colours


---

## ATTRIBUTES

- 100% Trevira CS
- Fire retardant
- Washable
- Wide-Width
- Contract drapes
- 2 designs
- 46 colours







Based in Nottingham, England, Villa Nova design and produce an eclectic range of furnishing and upholstery fabrics and wallcoverings. Villa Nova is part of The Romo Group and the range is available worldwide through an extensive network of selected interior designers and retail outlets. The Romo Group consists of six brands Romo, Black Edition, Villa Nova, Kirkby Design, Zinc Textile and Mark Alexander.

---

For further information, samples or press loans, please contact:

#### **UK & International**

James Eden  
T: 0207 352 7801  
E: james.eden@romo.com

Iain Niven  
T: 0207 352 7801  
E: iain.niven@romo.com  
pr@romo.com

#### **USA**

Maria Mancino  
T: (617) 737-0599  
E: maria.mancino@romousa.com

---

Alternatively, visit the Villa Nova website and register on the press site for access to the image library and press releases.

**[villanova.co.uk](http://villanova.co.uk)**