

CHIAROSCURO  
Press Release

zinc  
textile





## MONOCHROME MAXIMALISM

### CHIAROSCURO Decorative Prints and Weaves

---

Putting the iconic, trend-enduring pairing of black and white in the spotlight, Zinc Textile's Chiaroscuro collection is a bold statement of monochromatic magic.

Quieting the noise and concentrating on the design, the paired back use of black and white gives dimension and depth to decorative weaves and bold prints. Taking inspiration from a mix of genres, the Chiaroscuro range brings art deco geometrics, classic polka dots and folk art designs together in one eclectic compendium. Showcasing a range of textures, soft chenille and indulgent velvets offer a sumptuous tactility, while chunky embroideries and natural linen add a rustic, earthy element to this bold collection.







DREAM

Velvet  
2 Colours



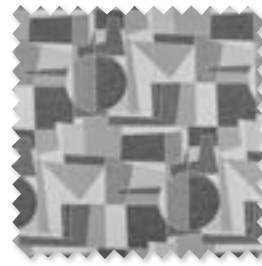
BEAUX

Bouclé Weave  
1 Colour



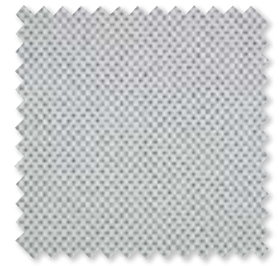
CECIL

Decorative Print  
1 Colour



CHIAROSCURO

Decorative Weave  
1 Colour



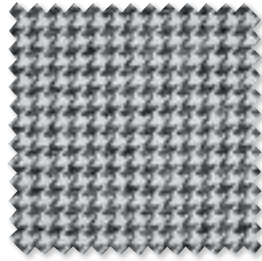
PABLO

Decorative Weave  
1 Colour



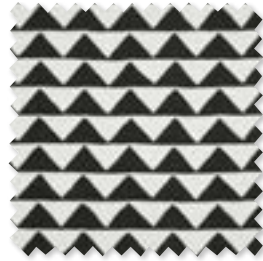
SELWYN

Semi Plain Chenille  
1 Colour



JACKIE

Decorative Chenille  
1 Colour



BERMUDA

Decorative Embroidery  
1 Colour



PORTER

Decorative Chenille  
1 Colour



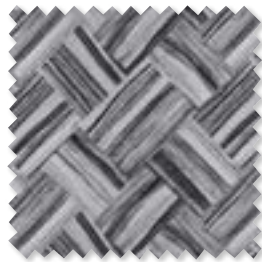
LECHUZA

Decorative Velvet  
1 Colour



BRIDGET

Decorative Weave  
1 Colour



PENTIMENTO

Decorative Weave  
1 Colour



MAYHEM

Embroidered Linen  
1 Colour



HORACE

Decorative Velvet  
1 Colour



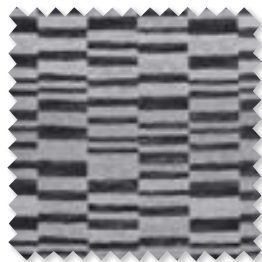
LAGRANGE

Decorative Chenille  
1 Colour



CITYSCAPE

Decorative Weave  
1 Colour



ELLSWORTH

Decorative Weave  
2 Colours



RABANNE

Decorative Weave  
1 Colour



FALCONETTO

Decorative Velvet  
1 Colour



PHIBBLESTOWN

Printed Linen  
1 Colour



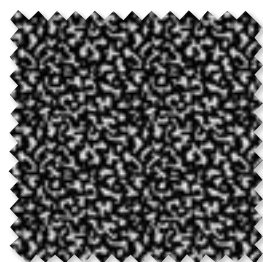
TWILLOGY

Semi Plain Weave  
2 Colours



WIGWAM

Digital Print  
1 Colour



BERTRAND

Decorative Cut and Uncut Velvet  
1 Colour





# CUSHIONS



Cityscape

Decorative Cushion  
ZC678/01  
50cm x 50cm (19.5" x 19.5")



Phibblestown

Printed Linen Cushion  
ZC471/03  
50cm x 50cm (19.5" x 19.5")



Mayhem

Embroidered Linen Cushion  
ZC681/01  
50cm x 50cm (19.5" x 19.5")



Pentimento

Decorative Cushion  
ZC682/01  
50cm x 50cm (19.5" x 19.5")



Horace

Decorative Cushion  
ZC683/01  
50cm x 50cm (19.5" x 19.5")



Chiaroscuro

Decorative Cushion  
ZC686/01  
50cm x 50cm (19.5" x 19.5")



Falconetto

Decorative Velvet Cushion  
ZC628/07  
50cm x 50cm (19.5" x 19.5")



Cecil

Decorative Cushion  
ZC694/01  
50cm x 50cm (19.5" x 19.5")



Ellsworth

Decorative Cushion  
ZC676/01R  
55cm x 35cm (21.5" x 13.5")



Dream

Velvet Cushion  
ZC236/07  
55cm x 35cm (21.5" x 13.5")



Bermuda

Embroidered Cushion  
ZC680/01R  
55cm x 35cm (21.5" x 13.5")



Jackie

Chenille Cushion  
ZC687/01R  
55cm x 35cm (21.5" x 13.5")

## ABOUT ZINC TEXTILE

Originality and cutting-edge design are at the forefront of the Zinc Textile brand. Starting the journey in 2010, Design Director Justin Marr launched a brand that found inspiration in the heady heights of the 1970s and has remained true to the original aesthetic, while continually pushing the boundaries of design. With new and innovative collections launching each year, Zinc continuously offers versatile fabric and wallcovering ranges with unexpected elements.

Zinc Textile is a division of The Romo Group, a family run business in its fifth generation. The range is available worldwide through an extensive network of selected interior designers and retail outlets.

Please contact us for price information, samples and images, we are also happy to arrange interviews and offer expert commentary from our designers.

### UK & International

Iain Niven  
iain.niven@romo.com  
0207 352 7801

### Europe

Roberta Natalini  
roberta.natalini@romo.com  
+44 (0)1623 727016

### Sweden

Mia Nordangård  
Mia@casarosa.se  
08-660 58 22

### South Africa

Laura Miller  
Showroom.jhb@romosouthafrica.com  
011 262 4167 / 084 614 7672

