

zinc
textile

SPLASH OUTDOOR

Press Release



SPLASH OUTDOOR

Outdoor Weaves

Zinc's penchant for breaking the mould continues with this fun and colourful collection of new outdoor fabrics.

Known as 'the black pearl of the Mediterranean', the island of Pantelleria is the backdrop and part inspiration for the Splash Outdoor collection. The perfect balance between bold and versatile designs, Splash Outdoor is an effortless collection of decorative stripes, a tactile bouclé and statement prints that all work alongside one another while offering their own unique character.

Light fastness – 6/7 | Stain resistant
UV ray resistant | Washable at 40 degrees
Mildew, mould and bacteria resistant



"Following on from the success of our Plage Outdoor collection, Splash Outdoor pushes the boundaries of outdoor designs and sets a new standard for durable fabrics."

Justin Marr, Design Director



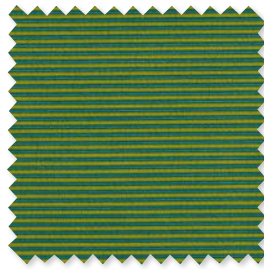
HARI
Outdoor Print
4 Colours
☞◇



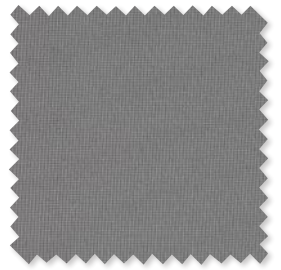
ZAMNA
Outdoor Weave
6 Colours
☞◇



COSSURA
Outdoor Weave
4 Colours
☞◇



SPADILLO
Outdoor Weave
5 Colours
☞◇



GHIRLANDO
Outdoor Wide width Sheer
2 Colours
◇☞



BUALE
Outdoor Weave
6 Colours
☞◇



GIANNI
Outdoor Weave
6 Colours
☞◇



SPLASH
Outdoor Print
3 Colours
☞◇☞



FLAMANDS
Wide width Outdoor Semi-sheer
1 Colour
◇☞

zinc textile

ABOUT US

Originality and cutting-edge design are at the forefront of the Zinc Textile. Starting the journey in 2010, Design Director Justin Marr launched a brand that found inspiration in the heady heights of the 1970s and has remained true to the original aesthetic, while continually pushing the boundaries of design. With new and innovative collections launching each year, Zinc continuously offers versatile fabric and wallcovering ranges with unexpected elements.

Zinc Textile is a division of The Romo Group, a family run business in its fifth generation. The range is available worldwide through an extensive network of selected interior designers and retail outlets.

Please contact us for price information, samples and images, we are also happy to arrange interviews and offer expert commentary from our designers.

UK

Iain Niven

Iain.Niven@romo.com

0207 352 7801

USA

Tamar Mashigian

tamar@cdecor.com

310-276-5001

Europe

Roberta Natalini

Roberta.Natalini@romo.com

+44 (0) 1623 755881

zinctextile.com

THE ROMO GROUP